



# Introducing the RM4Es Software System

Dr. Alex Liu  
Director  
The RM Institute  
Pasadena, CA, USA  
March 2009

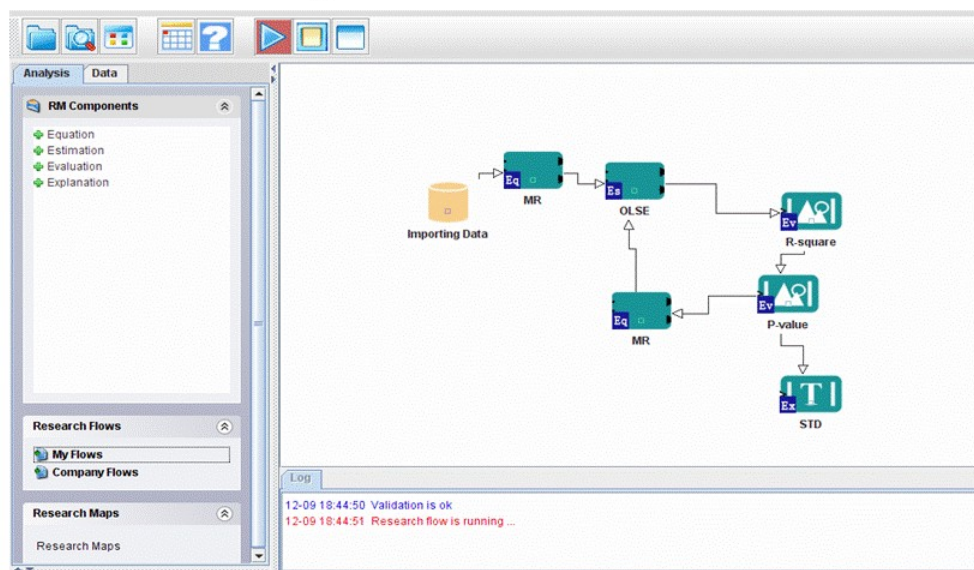
## What is the RM4Es Software

- A research flow management system for quantitative social and business research
- A research flow is a collection of analytical steps. For example, specifying a multiple regression equation, then select dependent variable and independent variables, then select ordinary least square method, then check R-square, and finally interpret the results is a simple but common used research flow.
- With this RM4Es system, users can easily create a research flow, and run it to get desired results. The created research flows can be saved for future use. The advanced features of the RM4Es system provides log file management functions and intelligent guidance.
- In general, this RM4Es system allows researchers, analysts and research managers to manage research and knowledge systematically

# Why do we need RM4Es software?

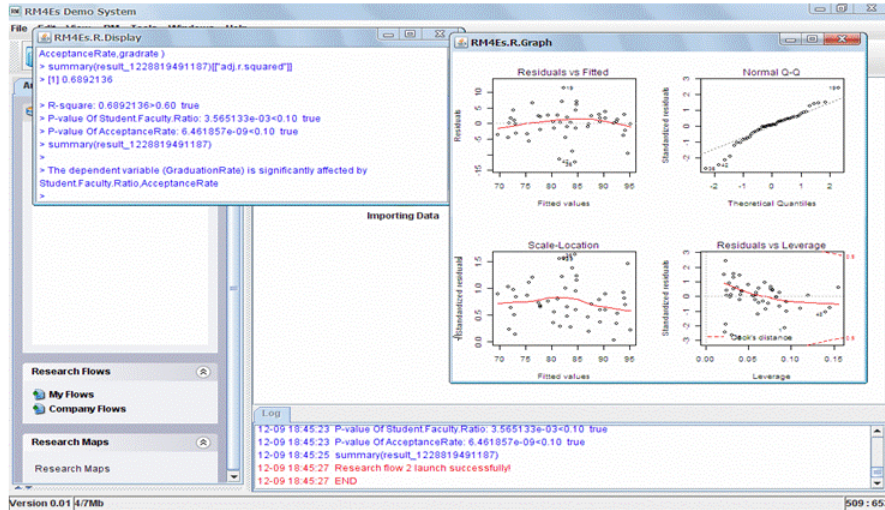
- As supported by the research of professor Young and professor Lubinsky (1995), in an environment where research flows can be structured and related intelligent guidance can be provided, data analysis productivity, accuracy, accessibility and satisfaction will all be improved.
- Research flows have huge impacts on the results of any data analysis, as demonstrated by many experiments such as that of professor Faraway (2004).
- Using the RM4Es system will increase research productivity and research quality.

# Introducing the RM4Es software



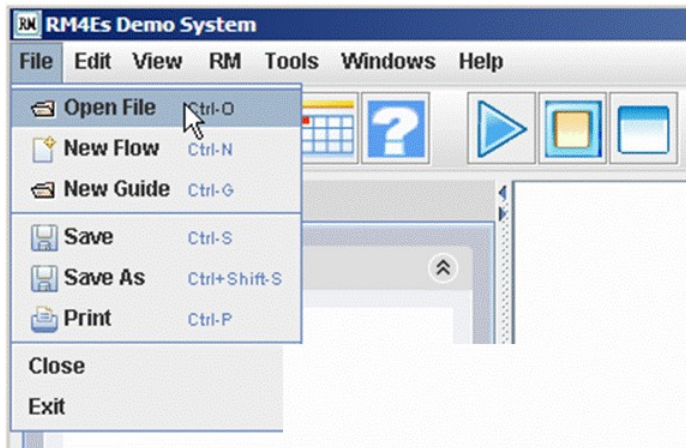
You can drag and drop research components to create a research flow easily.

# How does RM4Es software work?



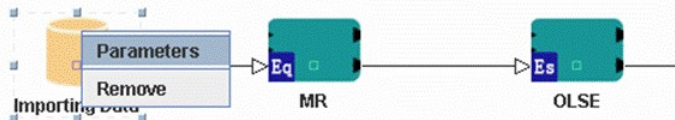
Then, you can click on RUN to get the results of your research flow.

## Open & Modify Flows

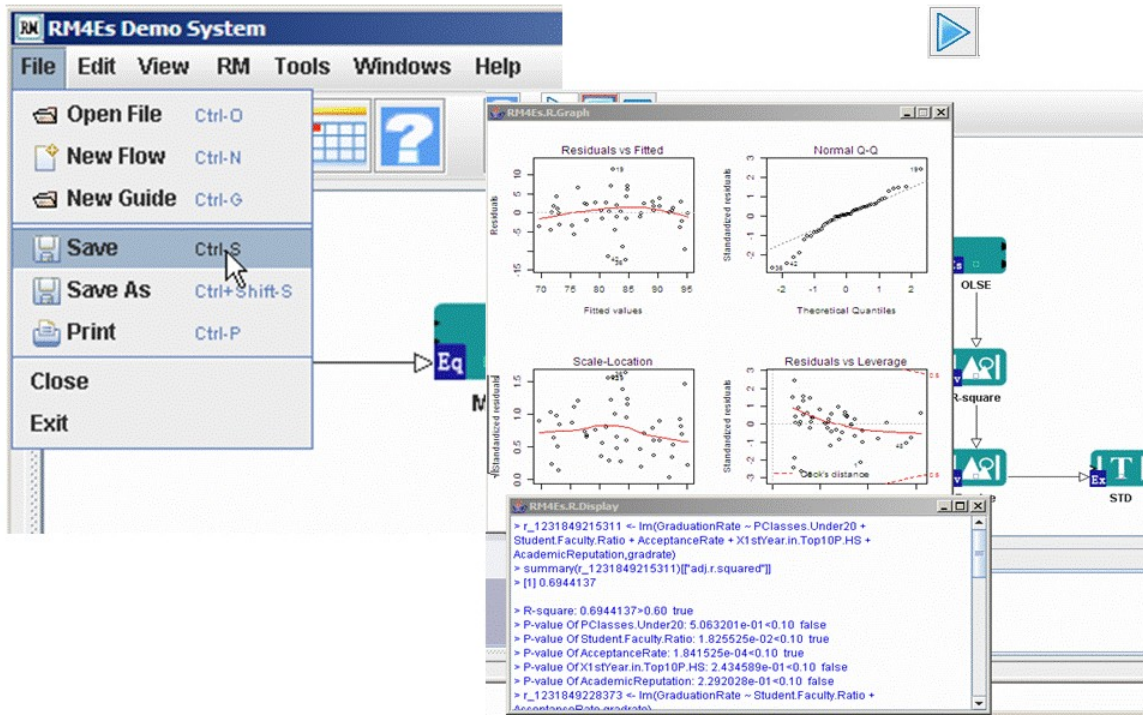


You just open an existing research flow file,

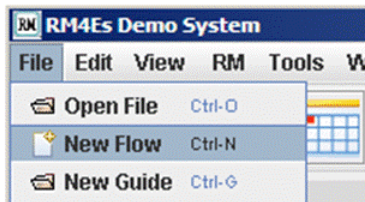
Then, modify some parameters of the research component you need to make changes.



# Then save and run it



# To create new research flow

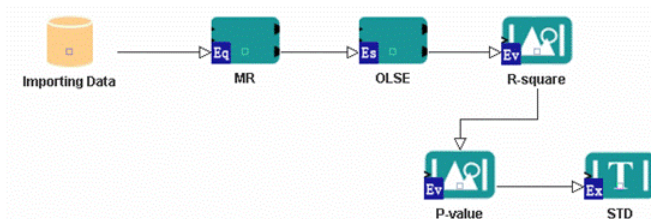


You need to click on File select New Flow then, drag research components to the flow window one by one and modify their parameters



then link these components

that is it!



Now, you can save the flow or RUN it to get your results.

# Advanced Features

- A library of research flow templates
- Mapping function that match your flow with similar ones in our flow warehouse
- Intelligent guidance to help your creating research flows and to optimize your research flows
- Log file management system to help managing records